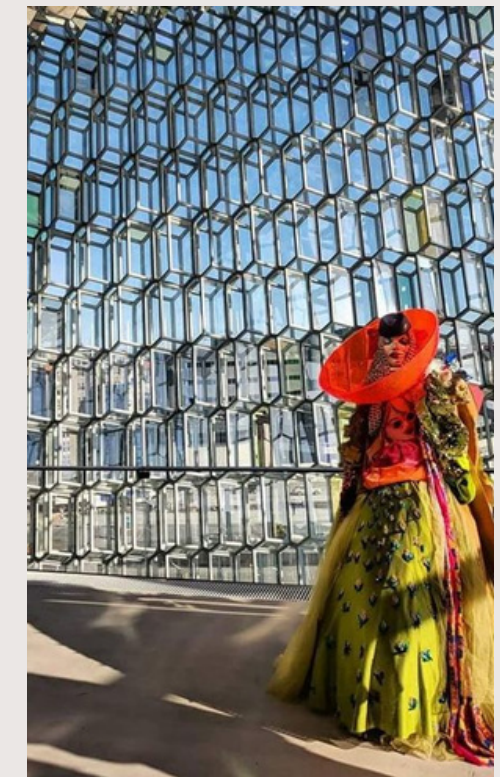


Kanthajavik.

Taking Kantha to Reykjavik...





Street Style.

VIBE / INSPIRATION / CRAFT



► Individualism & Creativity.

incorporating both traditional and modern elements.



▼ Bold Colours.

Bold colors, patterns, and textures are reflected through scarves, stockings, footwear, handbags, and headwear.



▼ Sustainability.

Sustainability is also an important aspect with locals prioritising thrifting and eco-friendly clothing.

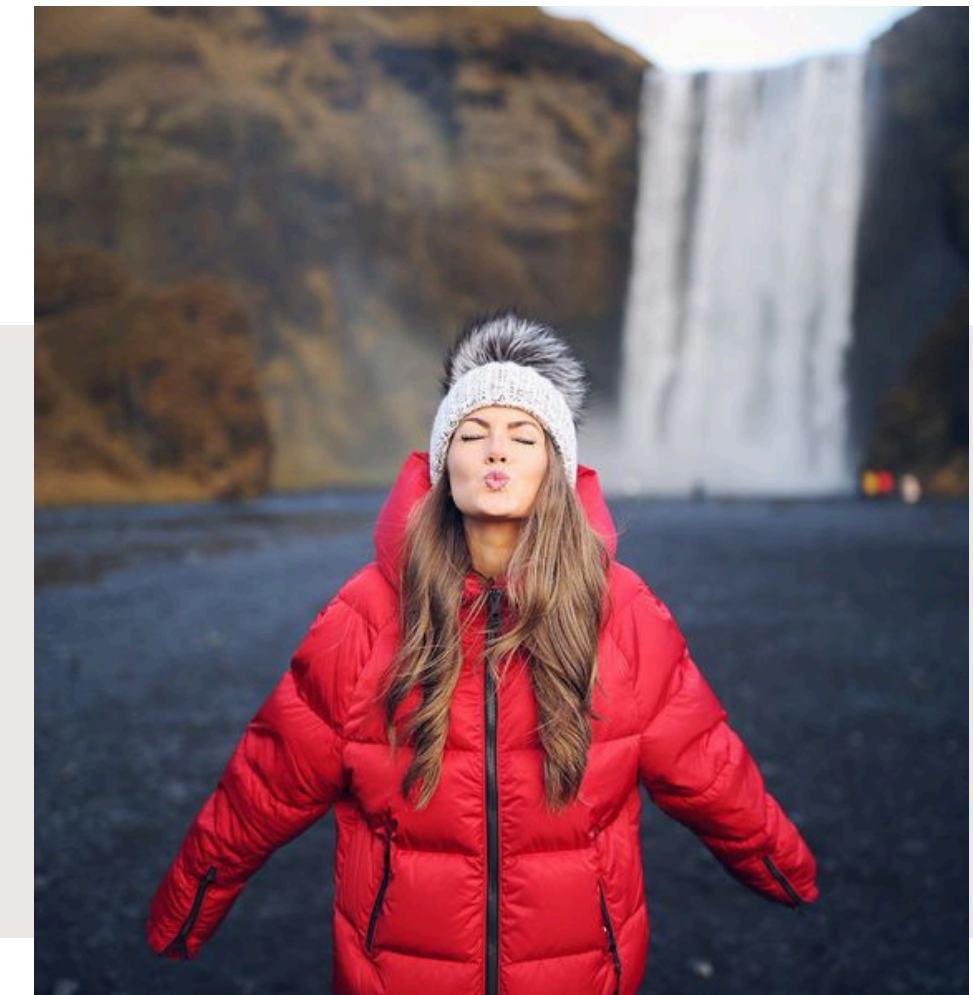
Bold Colours.



▼ Pop of colours.

Natives tend to wear clothes with a splash of colours in elements like stockings, handbags, scarves, socks, coats, etc.

Pearl Academy



► Bold Patterns & Colours.

Incorporation of bold patterns, colours, and textures can be seen on street.

Sustainability Aspect.



► Conscious Consumerism.

Reykjavik's street style is intricately linked to sustainability, reflecting the city's commitment to eco-friendly practices and conscious consumerism. The city's fashion scene embraces sustainable shopping options, such as second-hand stores like Hringekjan, which promote recycled fashion and offer chic Icelandic and international designs at discounted prices. Additionally, Reykjavik's design and fashion events, like DesignMarch, showcase progressive names in Icelandic fashion with a strong emphasis on sustainability and connecting with nature.

Sustainable Practices. ◀

Moreover, Reykjavik's street style reflects a growing trend toward sustainable fashion choices, with an increasing number of designers and brands in the city focusing on eco-friendly materials, upcycling, and ethical production methods. The city's street style enthusiasts embrace sustainable fashion to express their individuality while contributing to a more environmentally friendly shopping experience.

Overall, Reykjavik's street style embodies a fusion of creativity, originality, and sustainability, making it a unique and inspiring reflection of the city's commitment to a greener future.



Key Visual Aspects.

Oversized Clothing.



Colour Pop.



Unique Accessories.

Layering.



Reykjavik Street Style.

Reflection of individualism and creativity—incorporating both traditional and modern elements.

Sustainability is also an important aspect with locals prioritising thrifting and eco-friendly clothing.

Bold colors, patterns, and textures are reflected through scarves, stockings, footwear, and headwear.

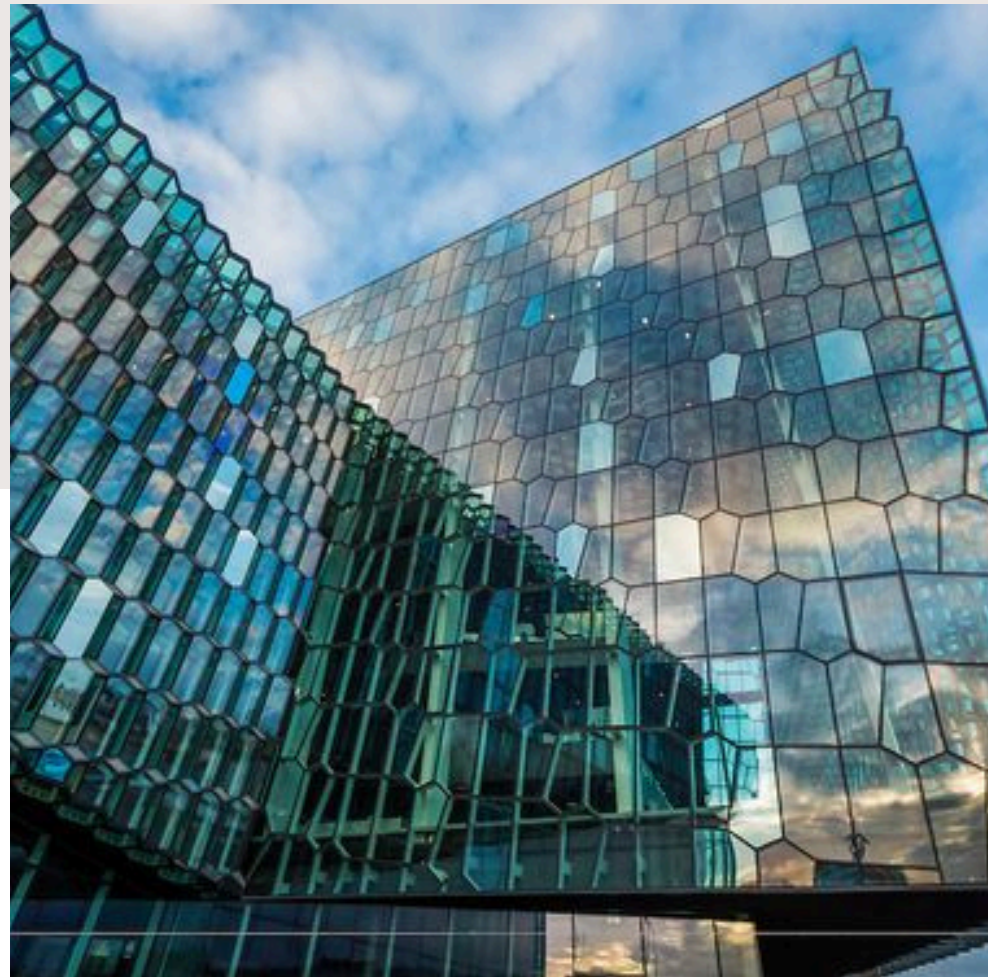


**–Layering
–Oversized clothing
–Unique accessories
–Colour pop**

Reykjavik Street Style.

Harpa Concert Hall.

VIBE / INSPIRATION / CRAFT



Design. ◀

Designed by the Danish firm Henning Larsen Architects in collaboration with Icelandic artist Olafur Eliasson.

Pearl Academy

► Framework.

It is characterized by a steel framework clad with glass panels of different colors, with lights in the panels that can change color and create different patterns.



▼ Glass Inspiration.

Colored glass façade inspired by the basalt landscape of Iceland.

Design.



▼ Inspiration.

The design of the Harpa Concert Hall in Reykjavik was influenced by Icelandic nature and the environment, particularly the Northern Lights and the unique scenery of Iceland, which is reflected in the building's appearance with glass hexagons that dominate the design inside and out



▼ Architects.

The building's facades were designed in collaboration between Henning Larsen Architects, Batteriid Architects, and artist Olafur Eliasson, aiming to create a dynamic structure that responds to the changing colors of the surroundings. During the day, the geometric figures create a crystalline structure that captures and reflects light, while at night, the facades are illuminated by LED lights, offering a variety of colors and patterns



▼ Main Hall.

The Harpa Concert Hall features four concert halls representing the elements of nature – fire, water, earth, and air. The main hall, Eldborg, named after a volcanic crater in Iceland, can seat up to 1,800 guests and is surfaced with red-varnished birch veneer, creating a warm and cozy atmosphere. The design team collaborated with Artec Consultants Inc. for the acoustics, sound isolation, and theater design, ensuring a high-quality auditory experience for visitors

Framework.



► “Quasibrick.”

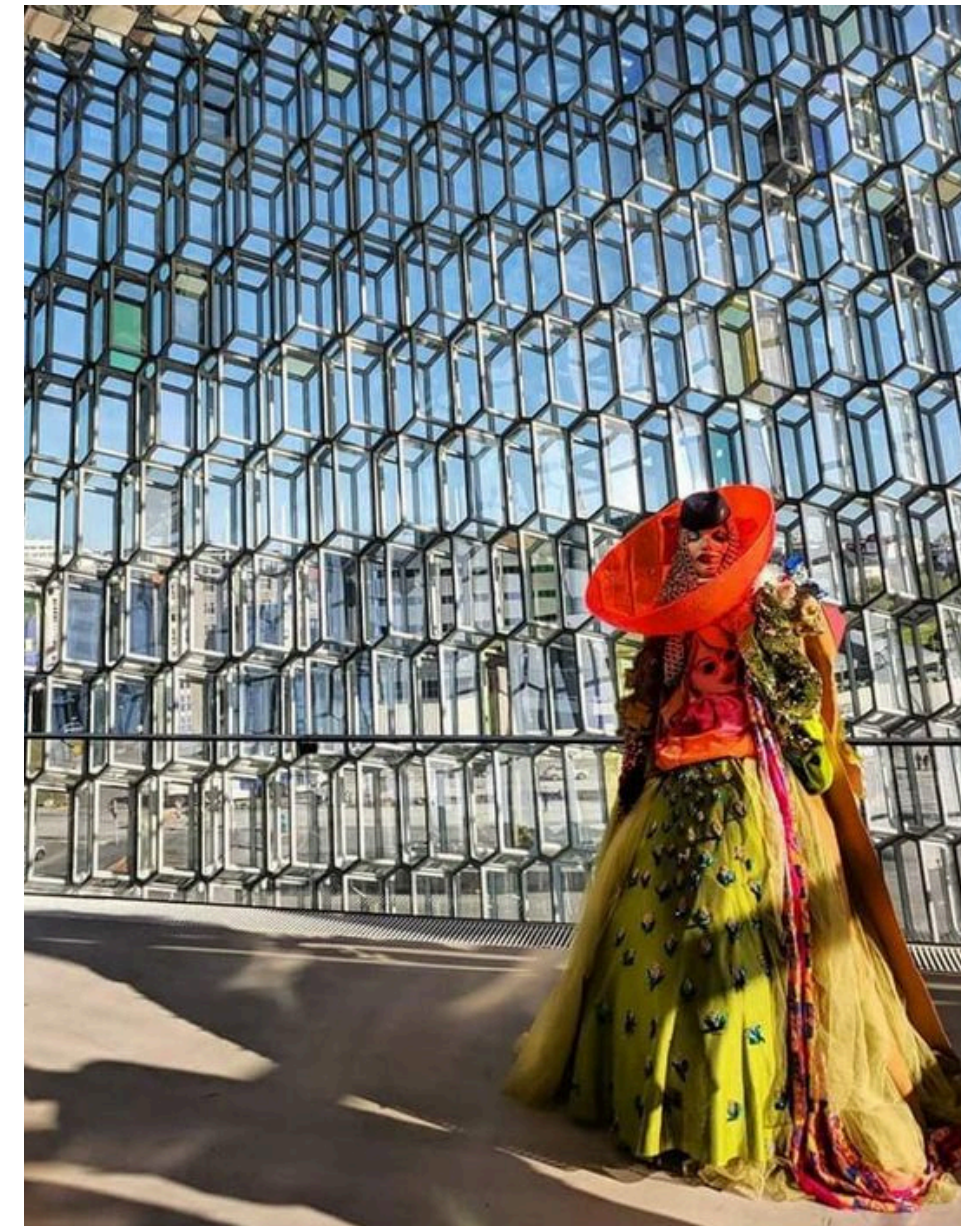
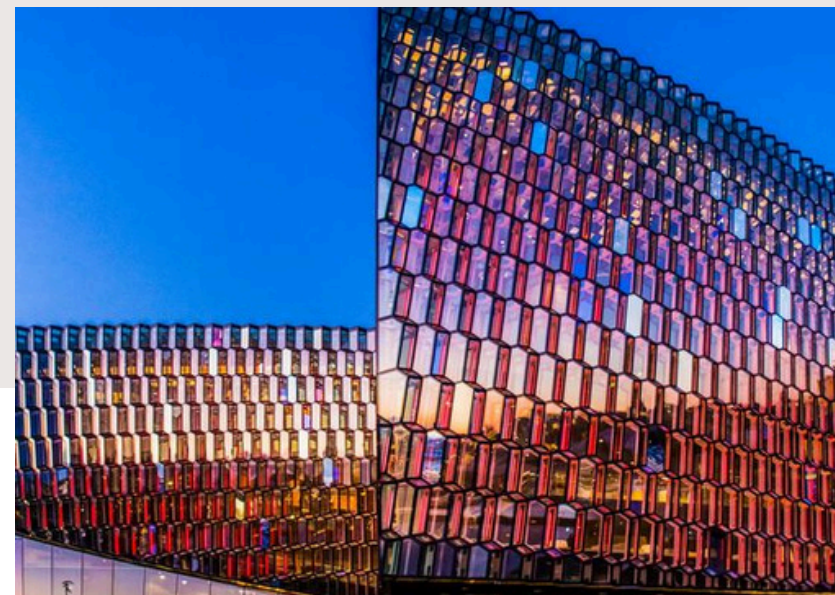
The Harpa Concert Hall's glass facade is a key architectural feature, comprising a steel framework clad with geometric-shaped glass panels in a modular system called the "quasibrick". The quasibrick is a twelve-sided polyhedron consisting of rhomboidal and hexagonal faces, which when stacked together create a chaotic, unpredictable quality to the facade.

Facade. ◀

The combination of regularity and irregularity in the quasibrick modules lends the Harpa's facades a dynamic, ever-changing appearance that reacts to the weather, time of day, and the position and movements of viewers. The south facade employs the three-dimensional quasibricks, while the other facades use two-dimensional sectional cuts of the same geometric system, resulting in a variety of patterns and reflections

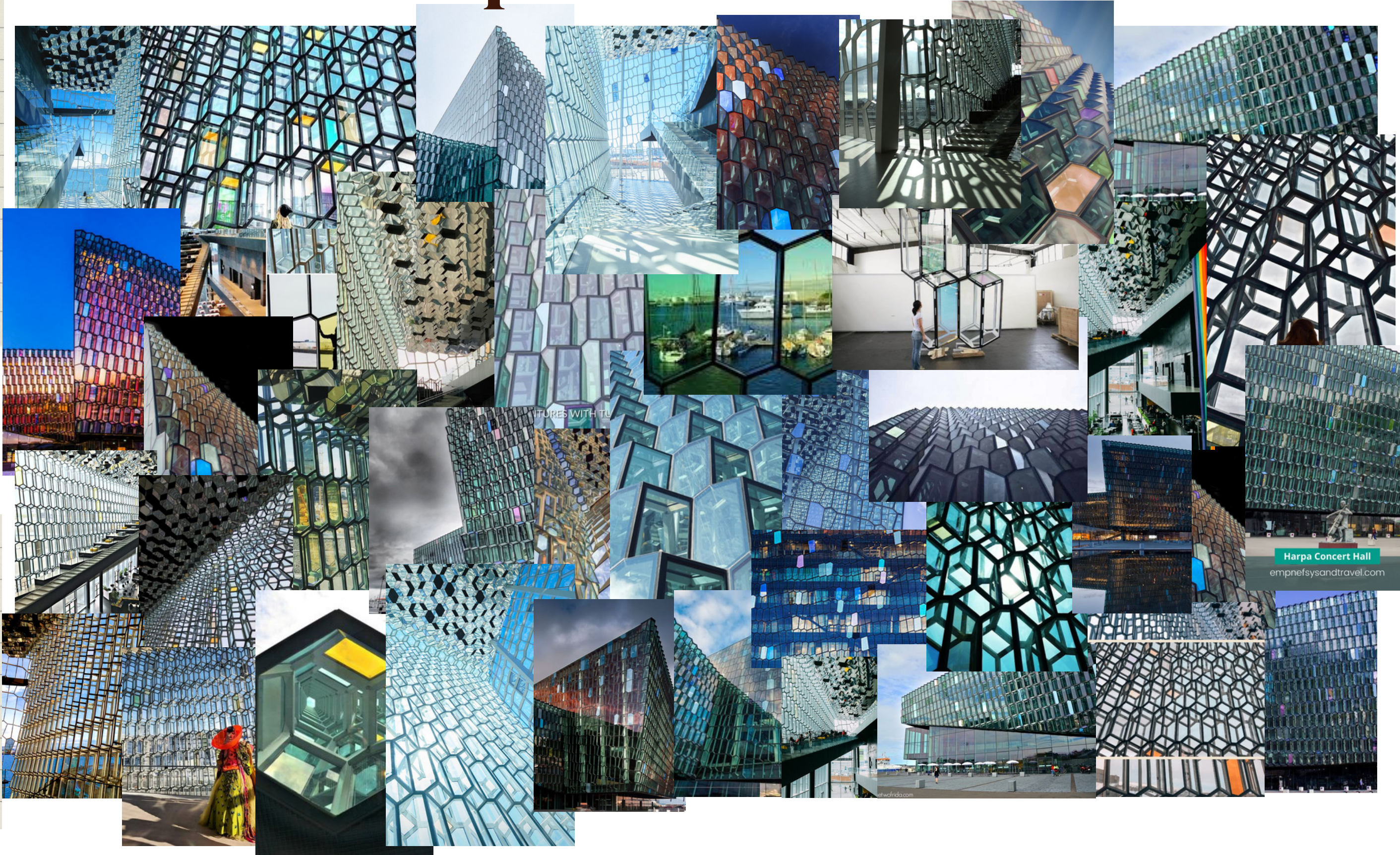


Gallery.



Harpa Concert Hall.

Designed by
the Danish firm
Henning Larsen
Architects in
collaboration
with Icelandic
artist Olafur
Eliasson.



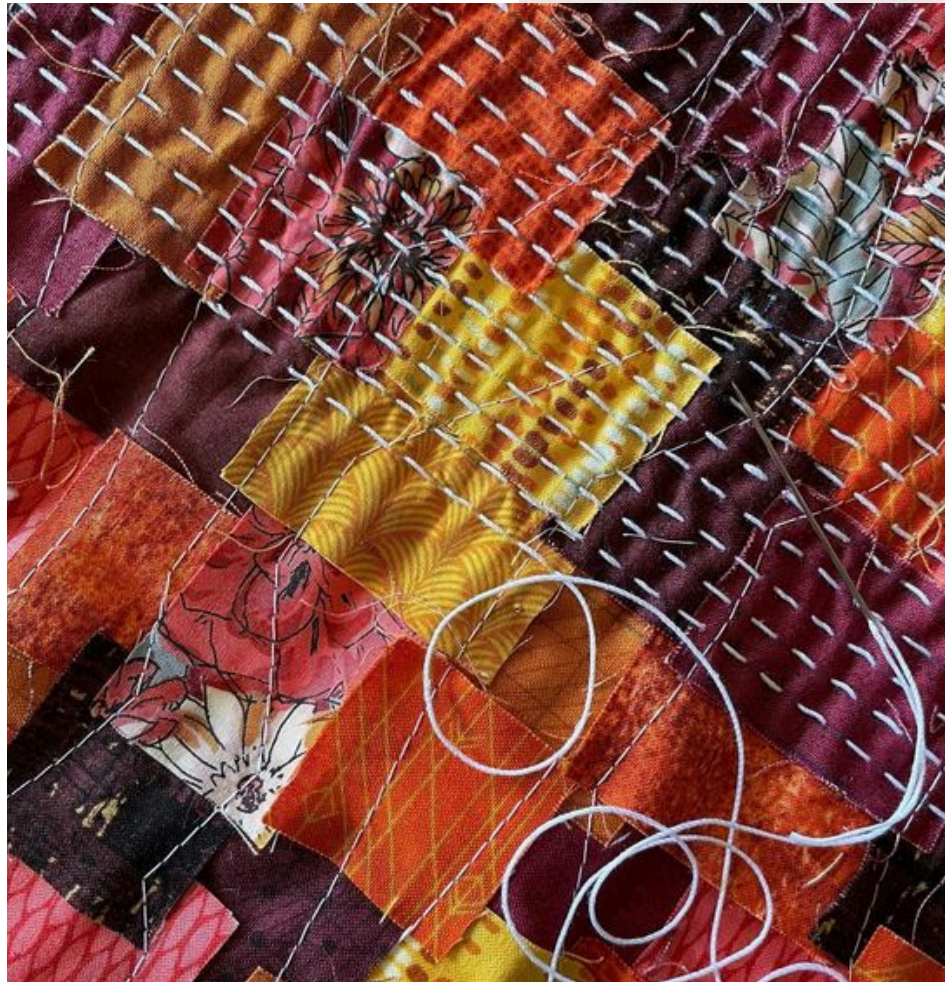
Colored glass
façade inspired
by the basalt
landscape of
Iceland.

It is
characterized
by a steel
framework
clad with glass
panels of
different
colors, with
lights in the
panels that can
change color
and create
different
patterns.

Harpa Concert Hall.

Kantha Stitch.

VIBE / INSPIRATION / CRAFT



▼ Origins.

Kantha is a type of embroidery craft that originated in Bangladesh and the eastern regions of India, particularly in the Indian states of West Bengal, Tripura, and Odisha. The word 'kantha' means 'rags' in Sanskrit, and the craft can be rightly called the recycling art because it evolved out of necessity to drape or protect against cold⁵. Traditionally, old saris or dhotis were layered and stitched together using a simple running stitch, often by rural women.



▼ Uses.

The traditional form of Kantha embroidery was done with soft dhotis and saris, and the embroidered cloth had various uses, including shawls, covers for mirrors, boxes, and pillows. Intricate motifs of flowers, animals, birds, and geometrical shapes, as well as themes from everyday activities, were commonly used in the embroidery.



▼ Utilitarian Practice.

In summary, Kantha is a traditional embroidery craft from Bangladesh and eastern India that has evolved from a simple utilitarian practice to a popular form of artistic expression. The Kantha stitch, a loose running stitch, is characteristic of the craft and is used to create intricate motifs and patterns on various garments and fabrics.

Gallery.

There are various regional styles of kantha, such as the geometric "par tola" kantha from Murshidabad, West Bengal.



Kantha refers to both the running stitch technique as well as the finished embroidered cloth.



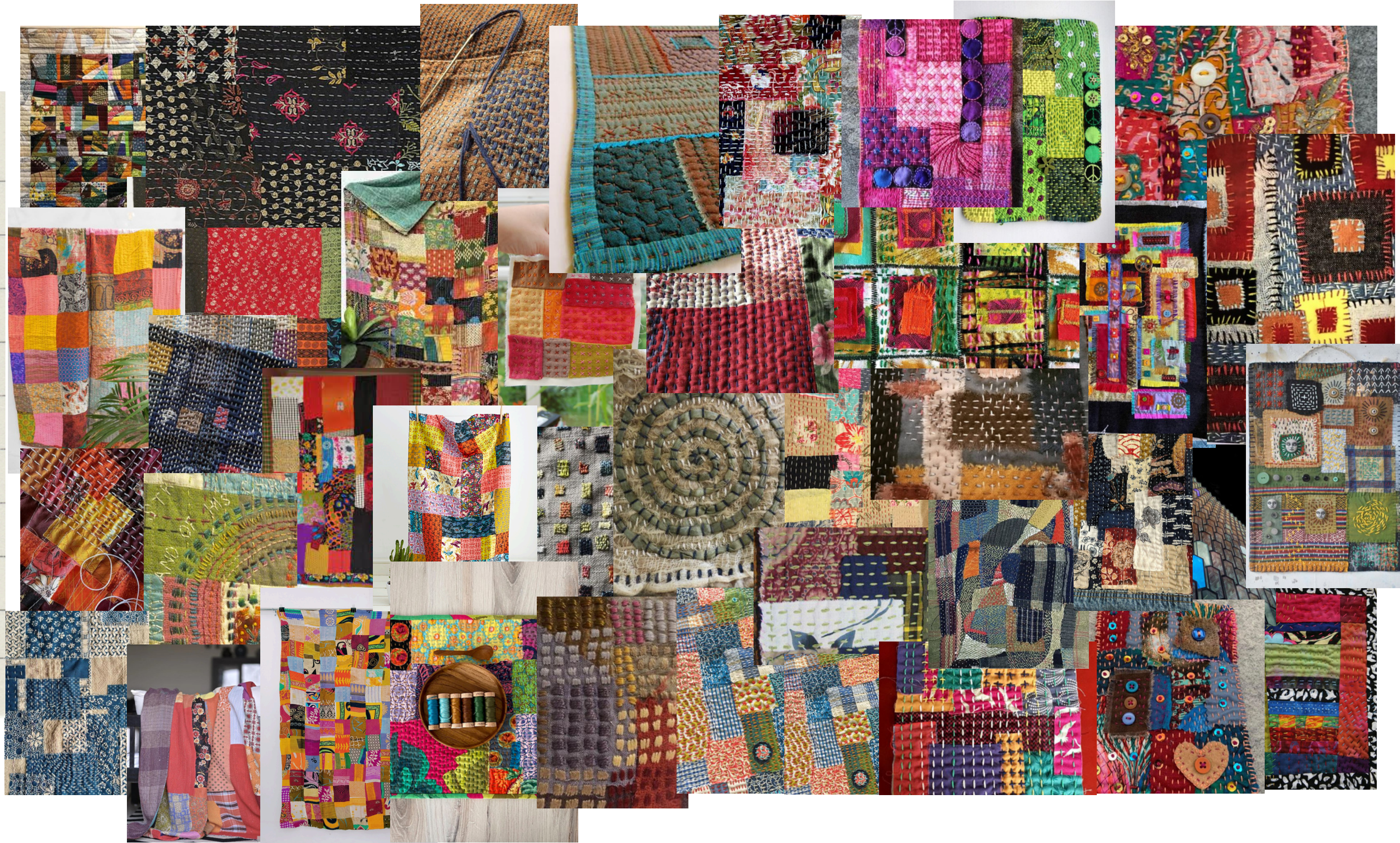
Kantha refers to both the running stitch technique as well as the finished embroidered cloth.



Kantha stitching can feature elaborate motifs and patterns influenced by religion, culture, and everyday life, known as "nakshi kantha".

“Kantha” Stitch.

Kantha stitch is a traditional embroidery technique from India. It involves simple running stitches that form intricate patterns. Typically, Kantha is done on cotton or silk fabrics.



Uses a long needle and colorful threads for vibrant designs. Kantha is versatile and can be used on sarees, dupattas, quilts, and more.

“Kantha” Stitch.

Color

J O U R N E Y .

*Next few slides would be a dossier of how
the color palette is going to be extracted.*

Street Style of Reykjavik.

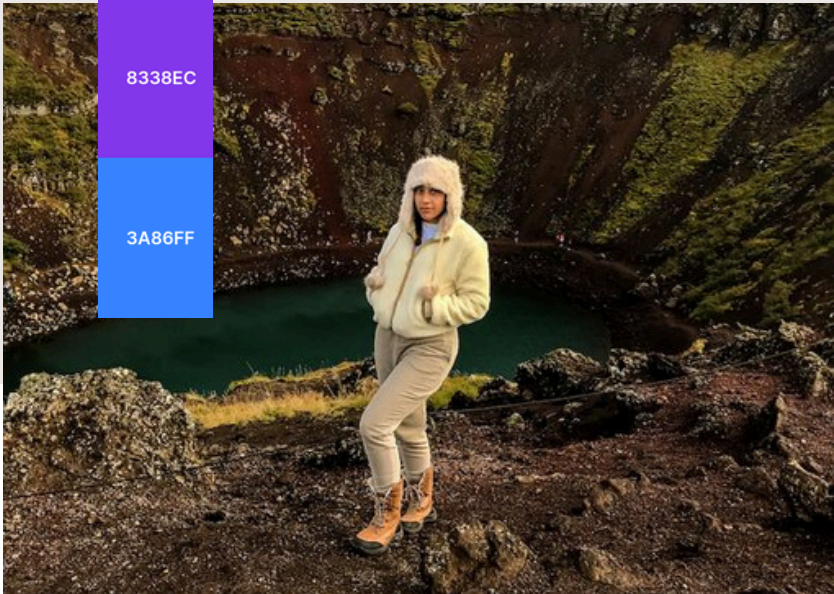
Vibrant
Contrasting
Colours



Warm Earthy
Tones.



Fluorescent
Accents.

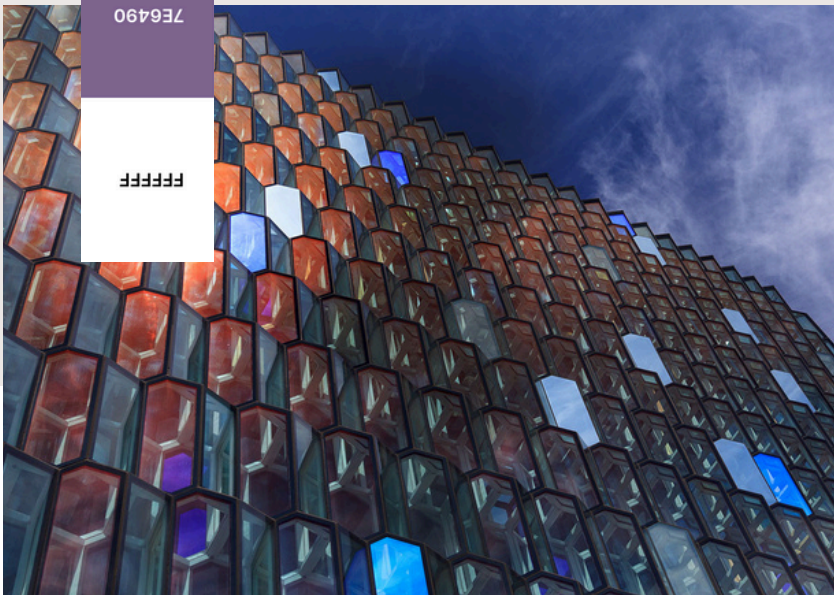


Monochromatic
Neutral Tones.



Harpa Concert Hall.

Crystalline
Colours.



Red Tones.



Basalt Colours.

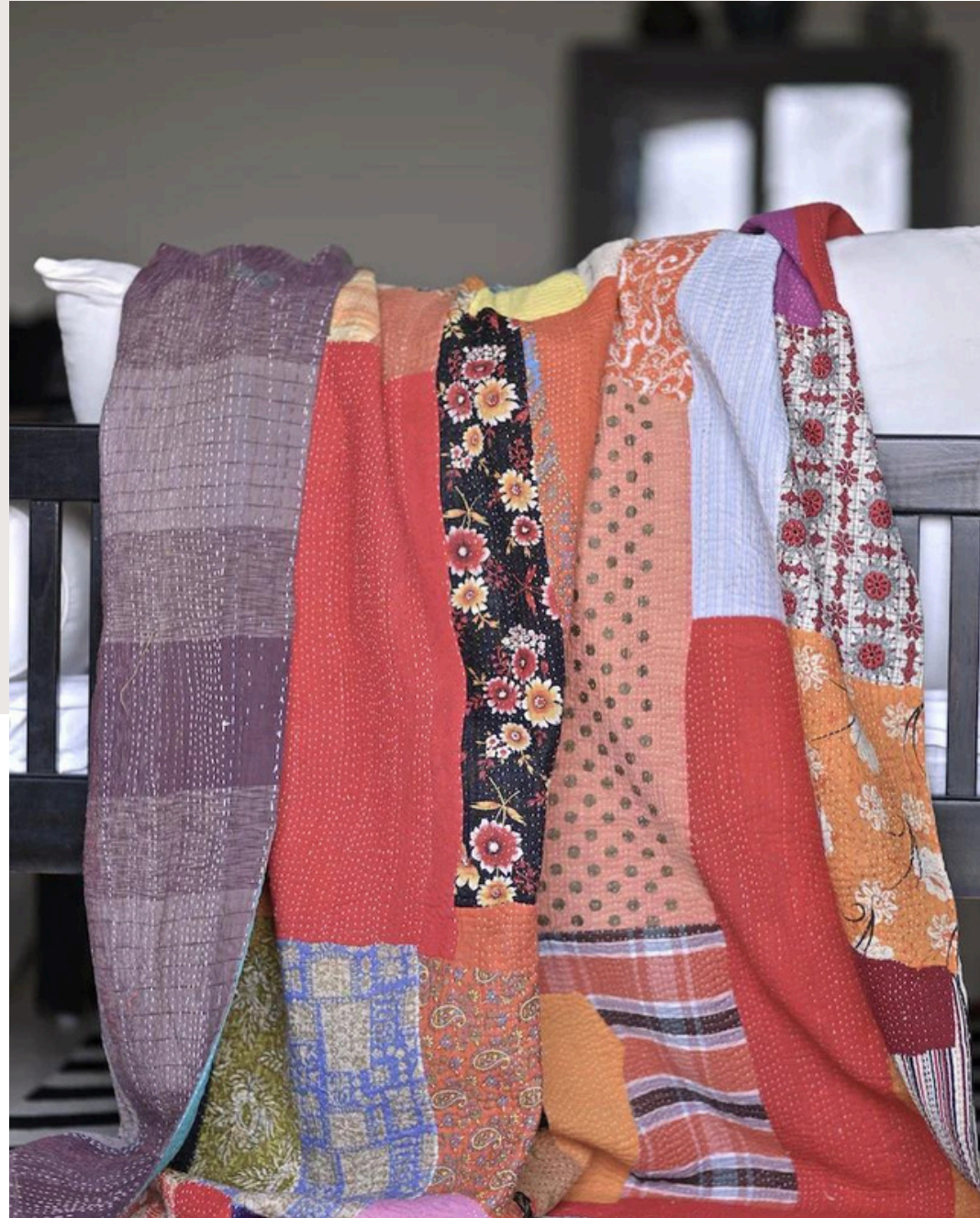
F8F9FA	E9ECEB	DEE2E6	CED4DA	ADB5BD	6C757D	495057	343A40	212529
--------	--------	--------	--------	--------	--------	--------	--------	--------

Reflective Sky
Hues.

044389	F25F5C	03120E	5995ED	DCD6F7	76A8F0	813405	8DB7F2	97BEF3
--------	--------	--------	--------	--------	--------	--------	--------	--------

0B090A
161A1D
660708
A4161A
BA181B
E5383B

Kantha.



► No specific colours.

Since Kantha is a form of patchwork using fabrics from what already exists and would usually go to waste, it almost always consists of fabrics originating from old dhotis and sarees used for this embroidery. Over time, almost any color that suits the design can be used in Kantha embroidery



Key Palettes.



▲ Crystalline Colours (Harpa)

Vibrant Contrasting Colours (Street Style) ▼



▲ Warm Earthy Tones (Street Style)



▲ Reflective Sky Hues (Harpa)

Final Color Palette.

International Lab Experience.

Project Colours.						
	<div></div>	<div></div>	<div></div>	<div></div>	<div></div>	<div></div>
	044389	7E6490	FF006E	CB997E	6B705C	FFBE0B
50% opacity	<div></div>	<div></div>	<div></div>	<div></div>	<div></div>	<div></div>
codes	#044389	#7E6490	#FF006E	#CB997E	#6B705C	#FFBE0B

Reykjavik.

Client.

International lab Experience.



A person who values art and where it is coming from, how ethical it is, a person who does not let their mind differentiate based on gender and set preconceived norms.

Independent.

Women Led.

Art Driven.

Conscious Consumer.



Layering.

*Open Minded with
Colours.*

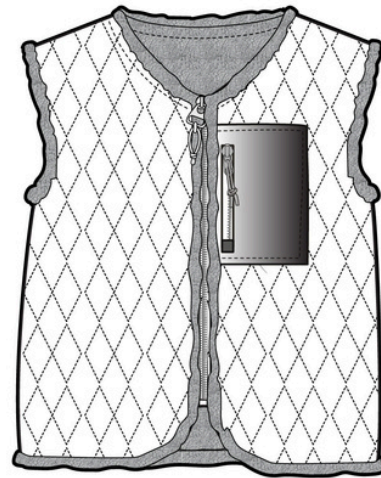
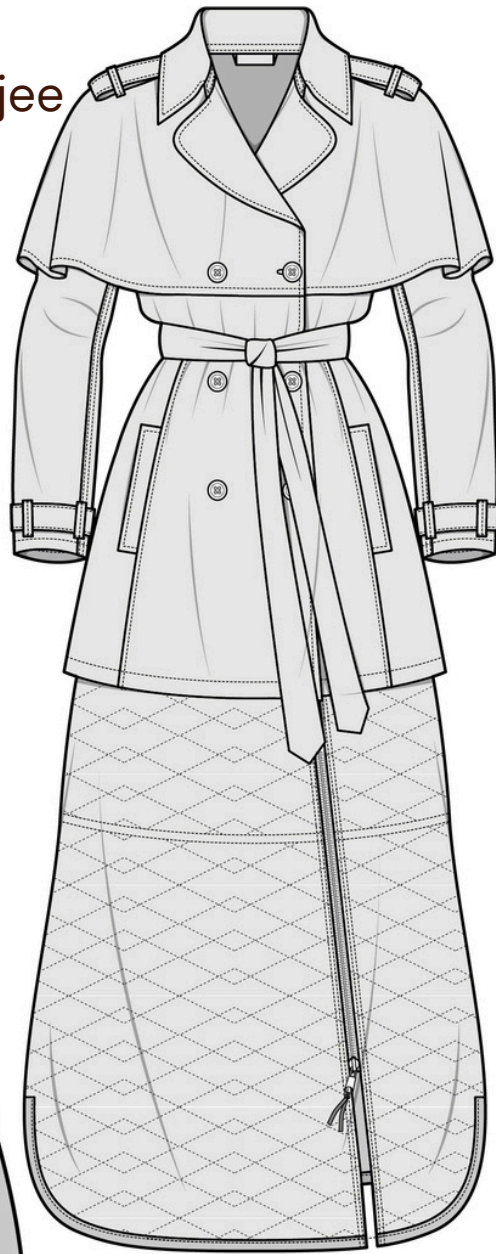
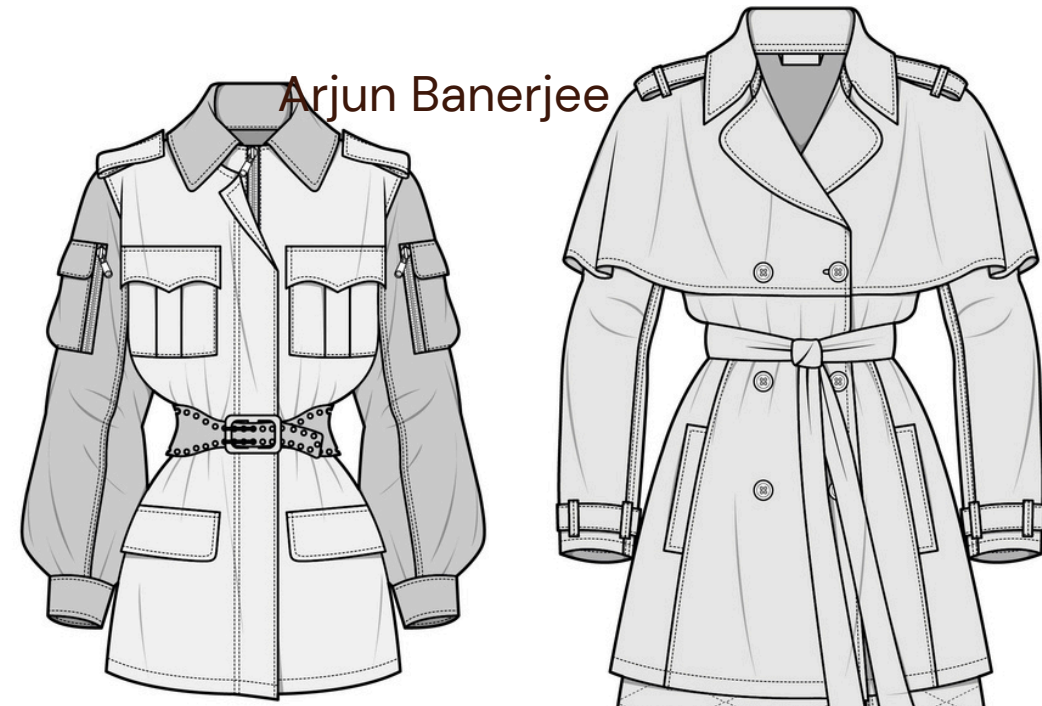
Deciphering Shapes.



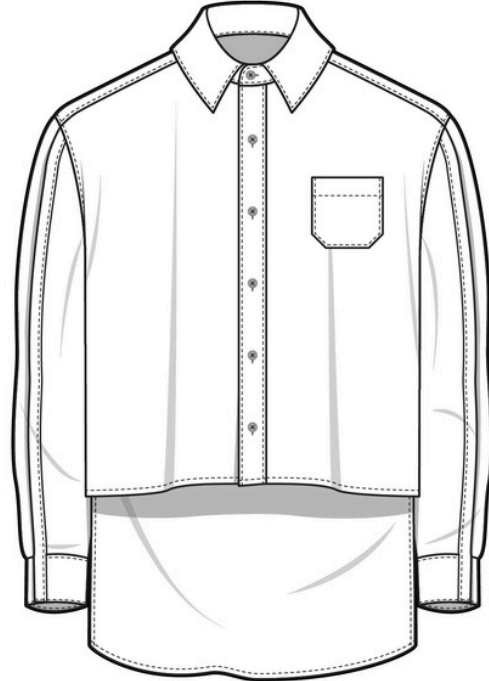
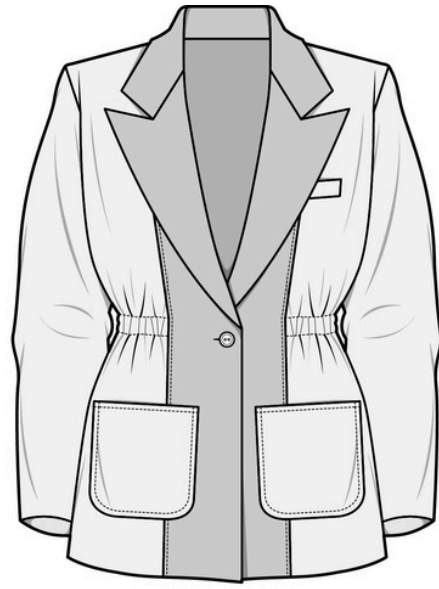
Deciphering Shapes.



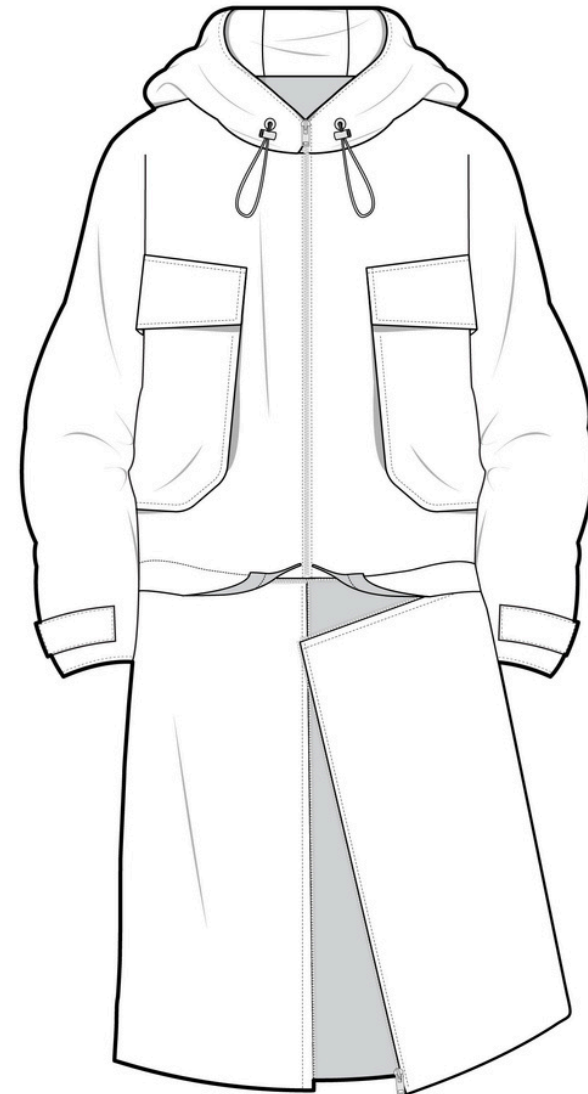
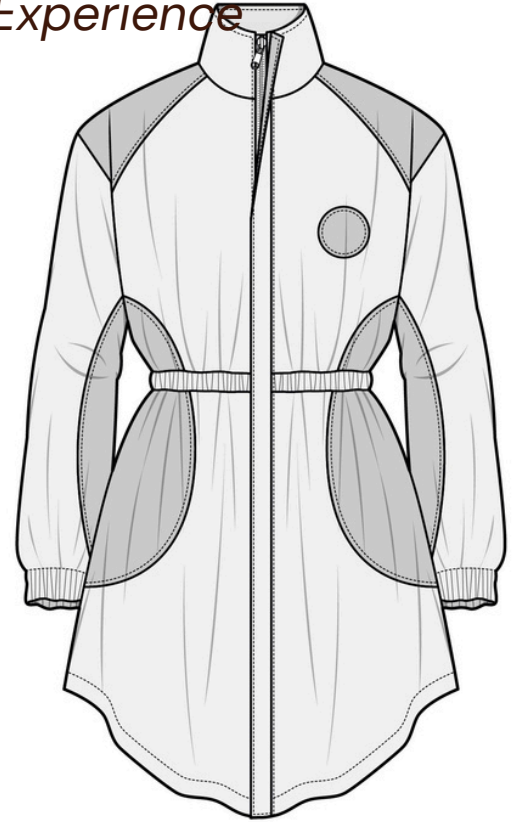
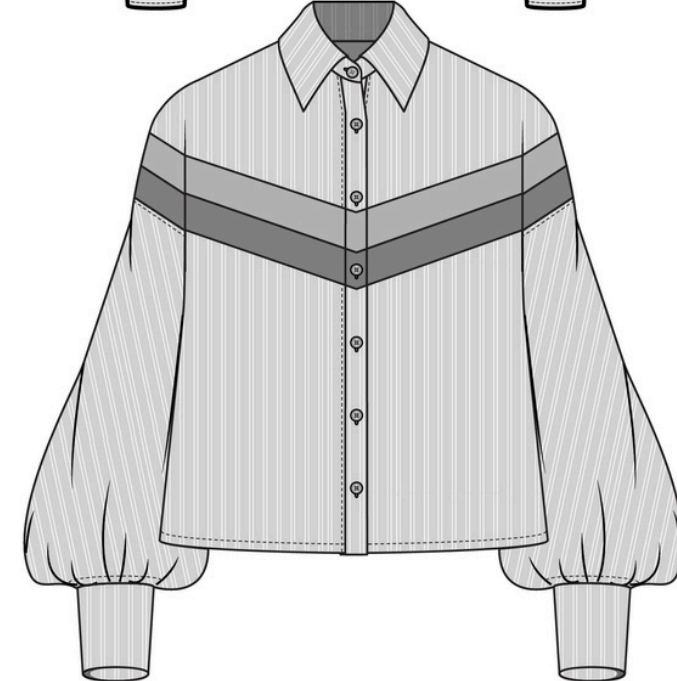
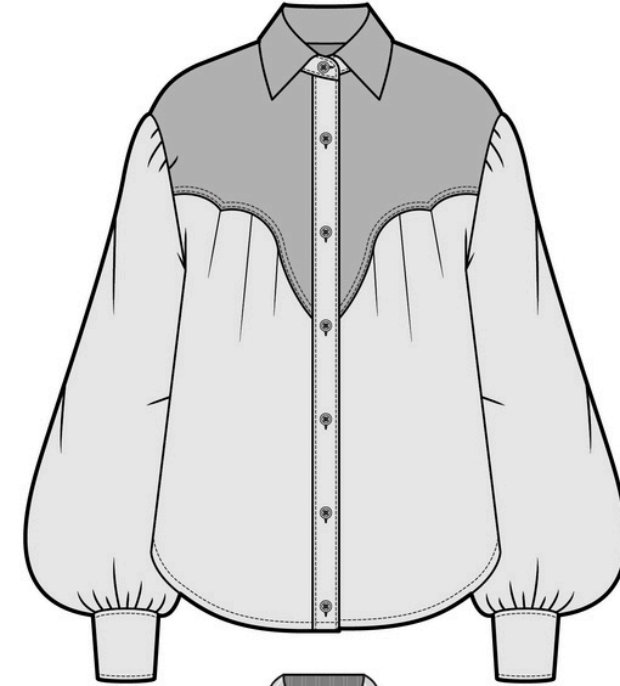
Arjun Banerjee



Pearl Academy

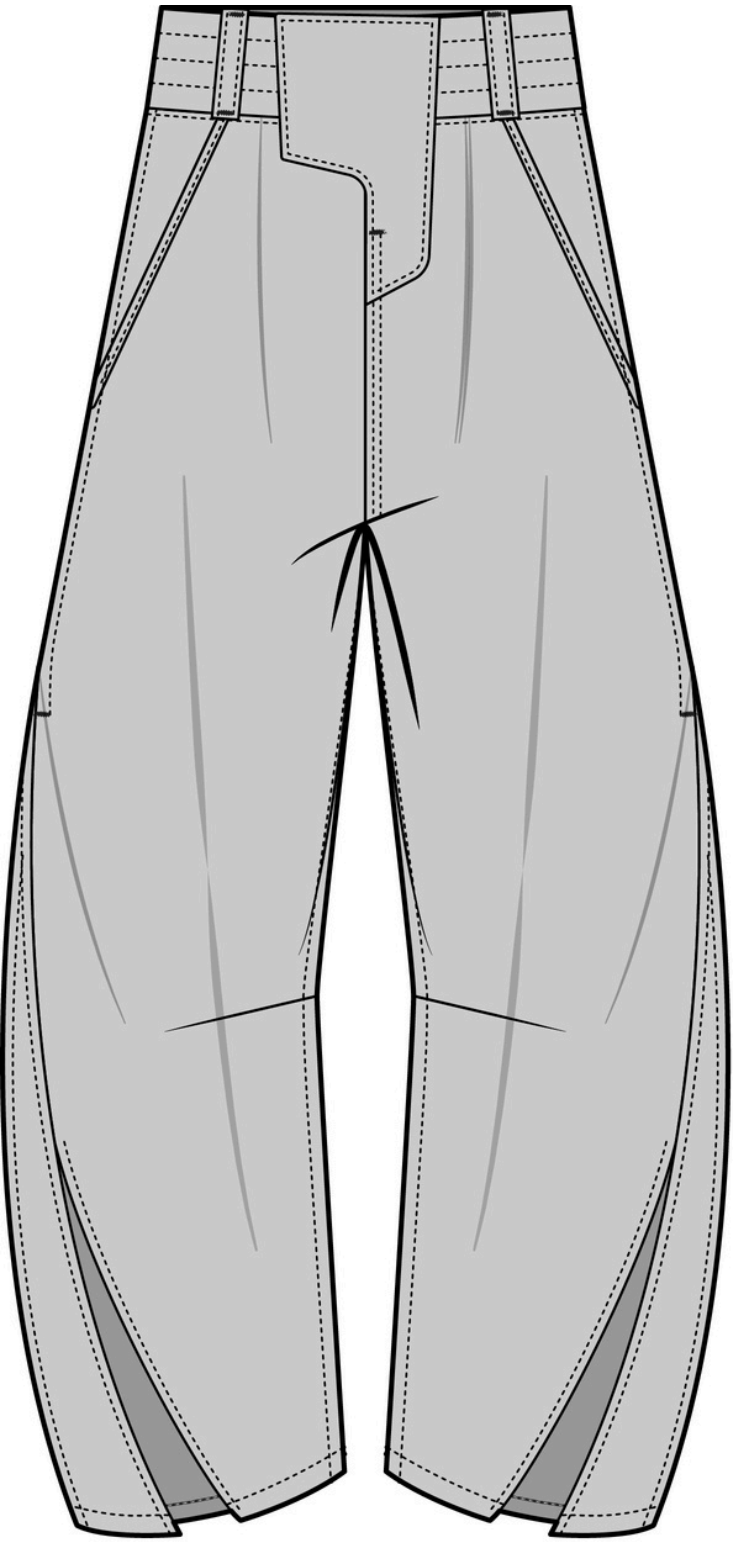


International Lab Experience

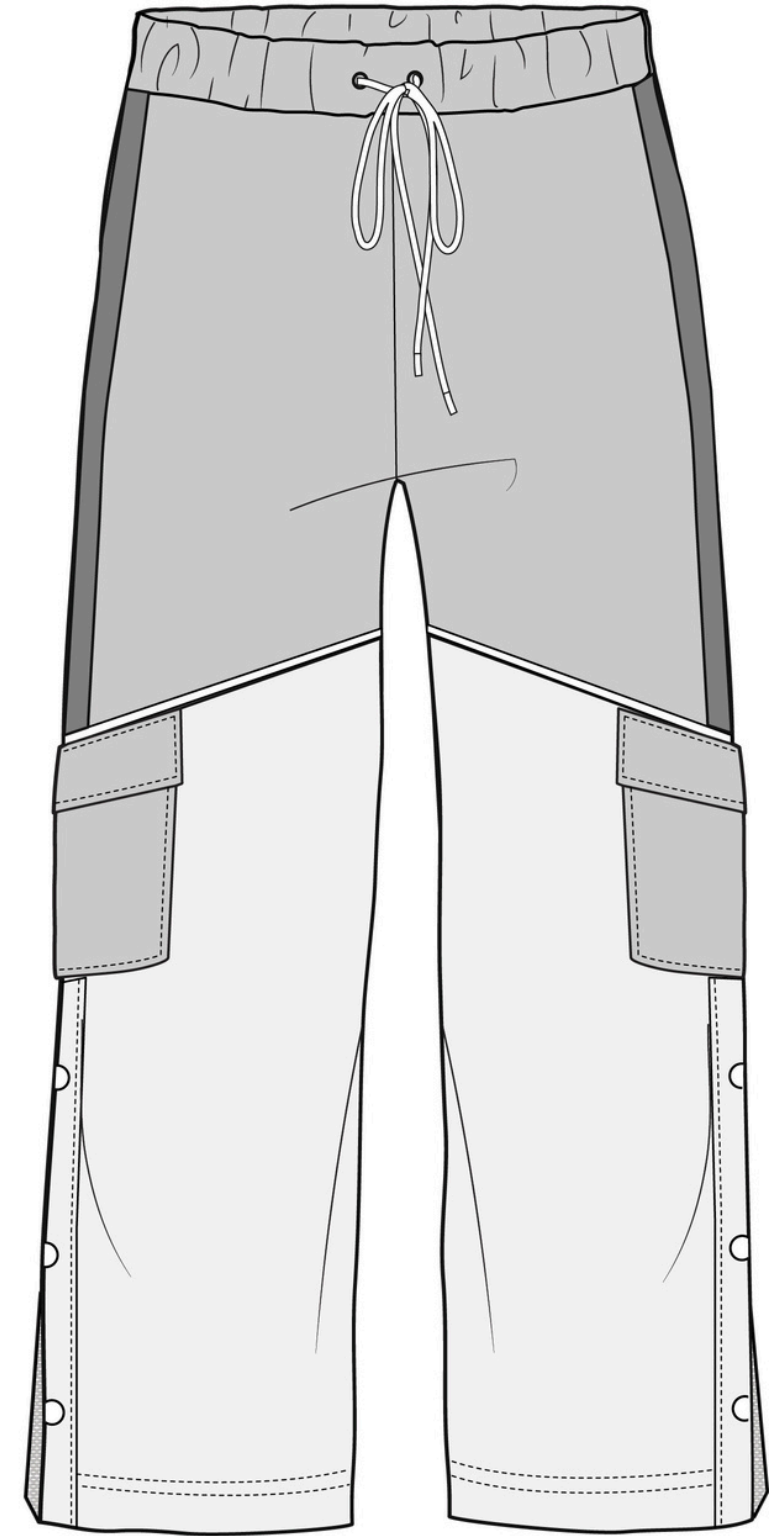


Exploring Shapes.

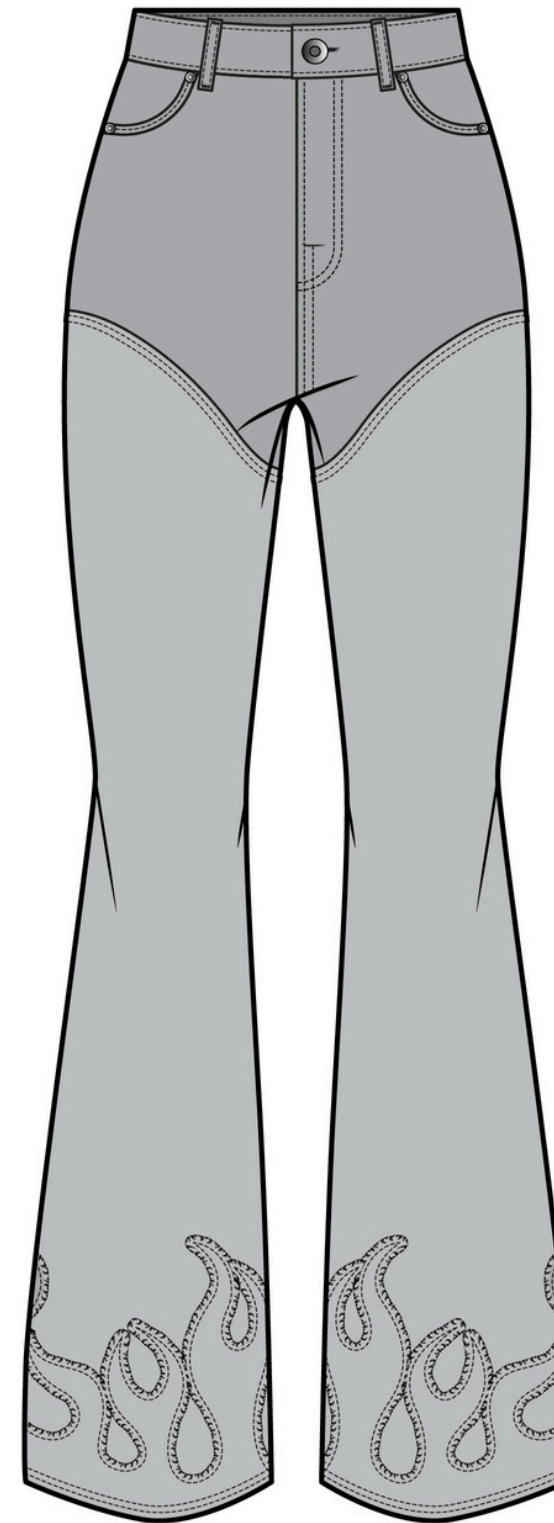
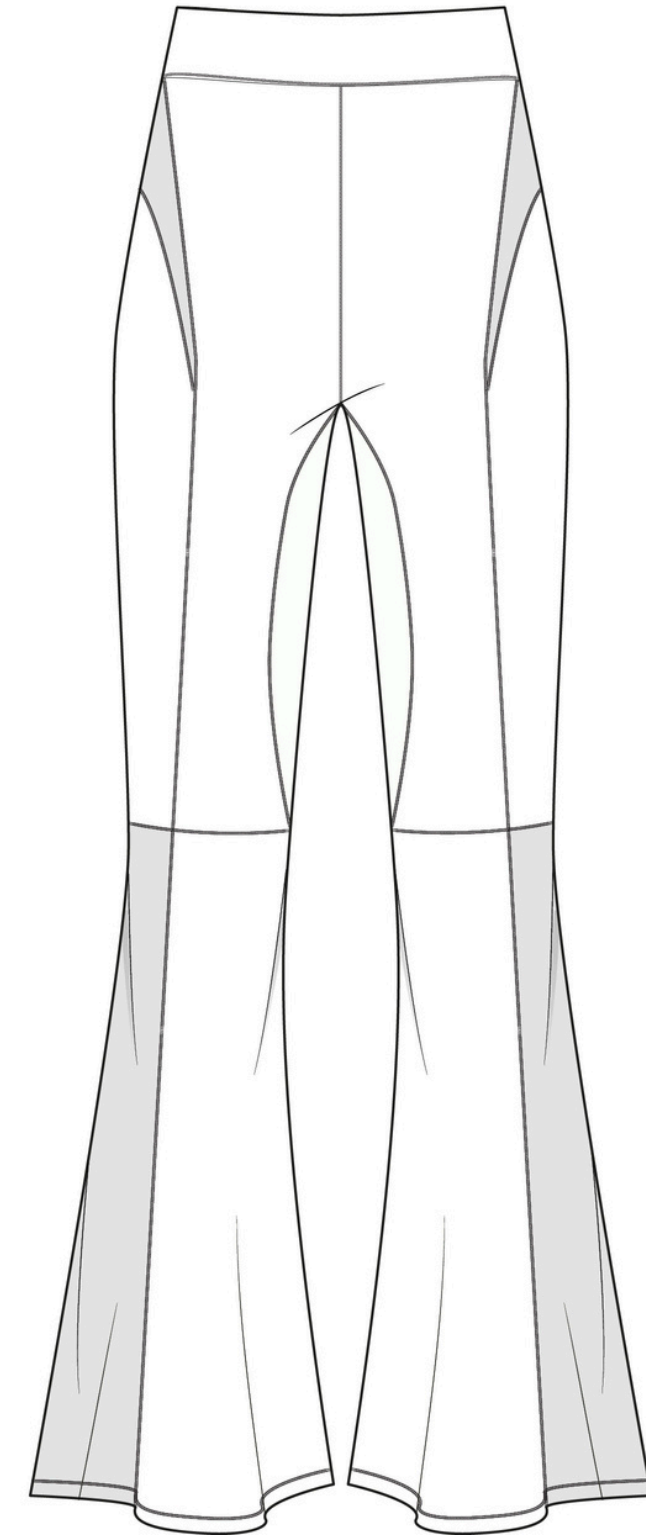
Arjun Banerjee



International Lab Experience



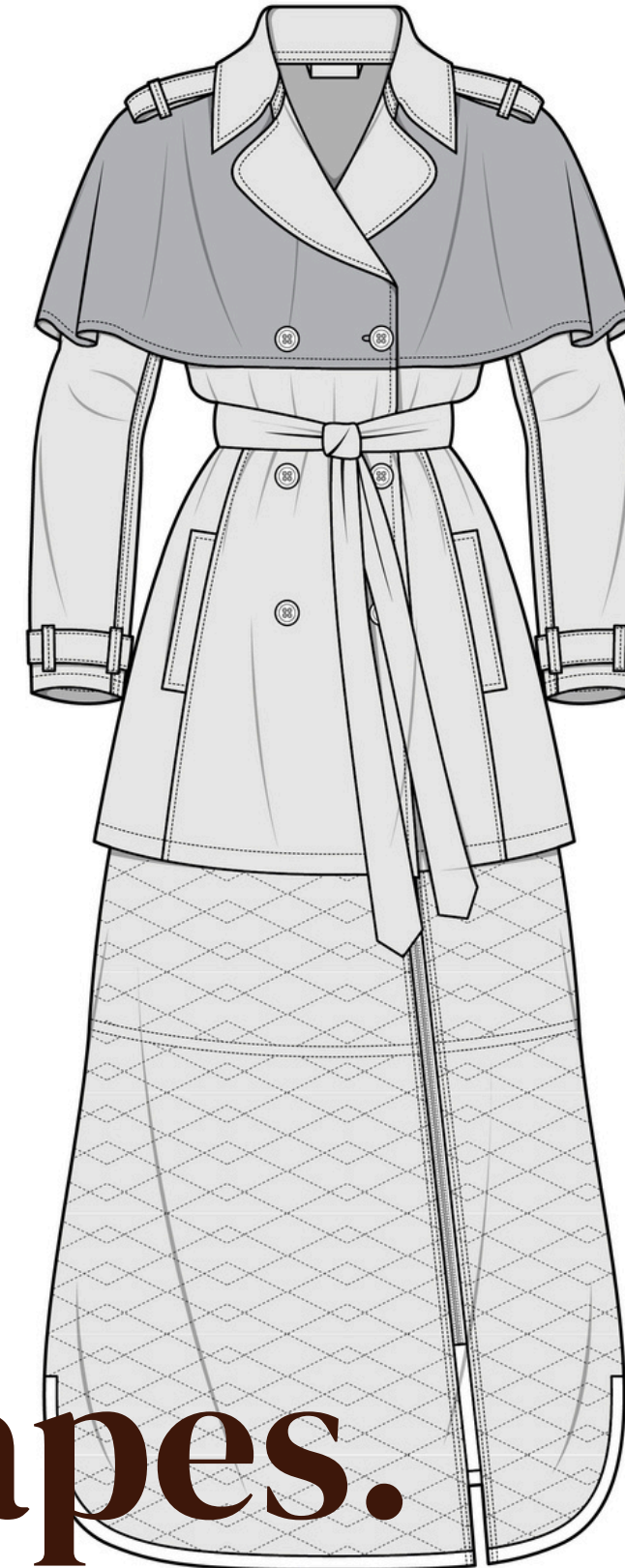
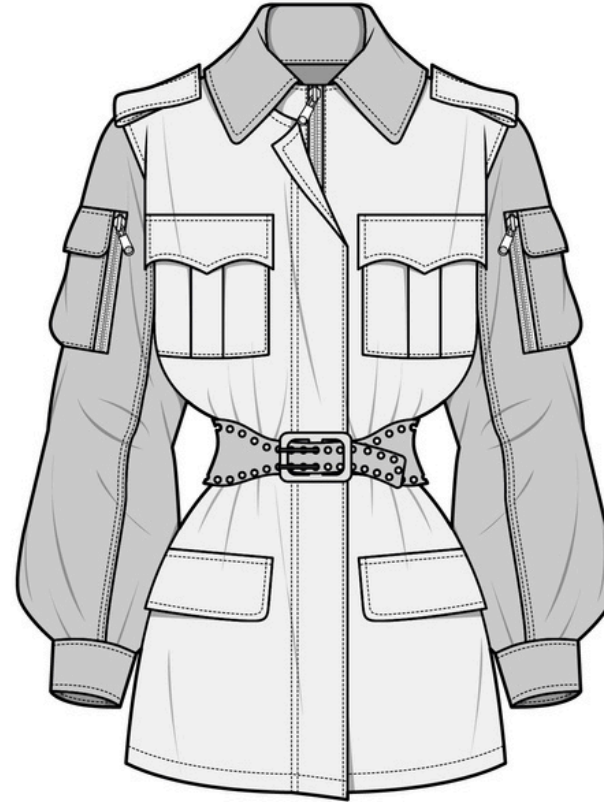
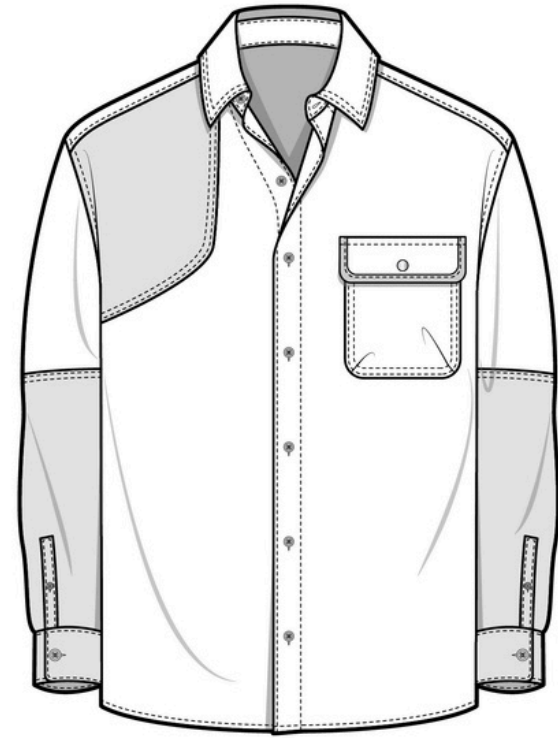
Pearl Academy



Exploring Shapes.

Arjun Banerjee

International Lab Experience

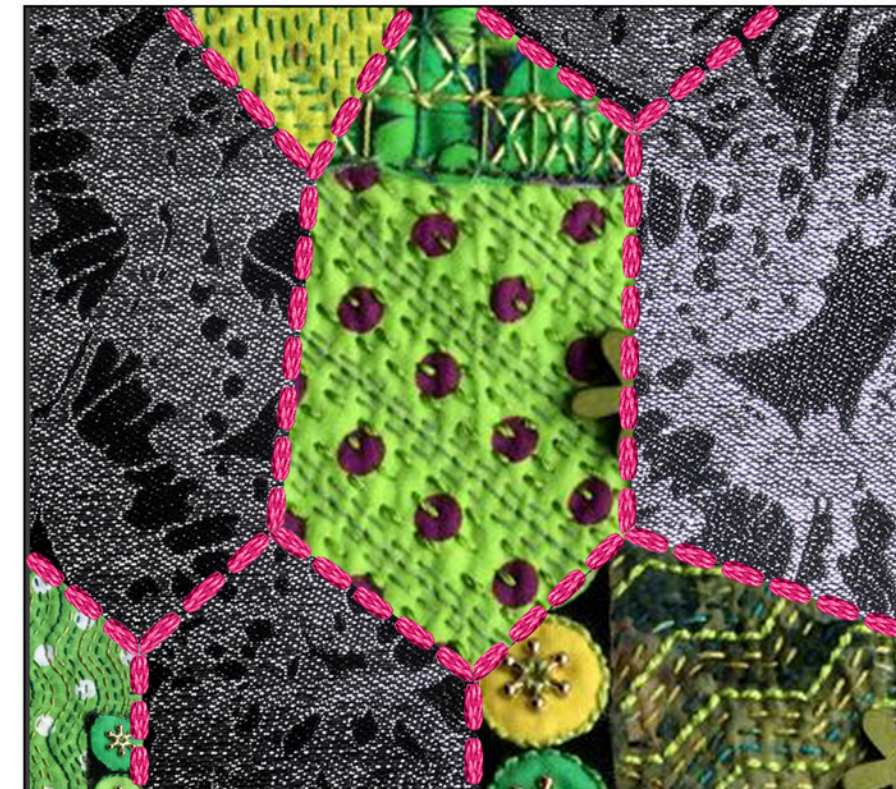
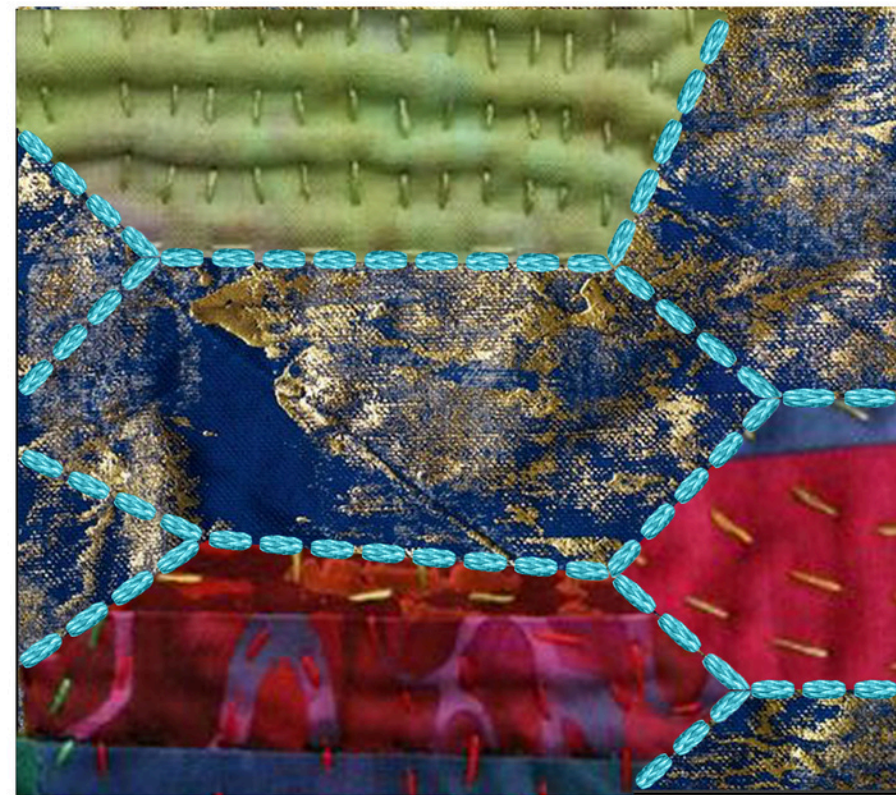
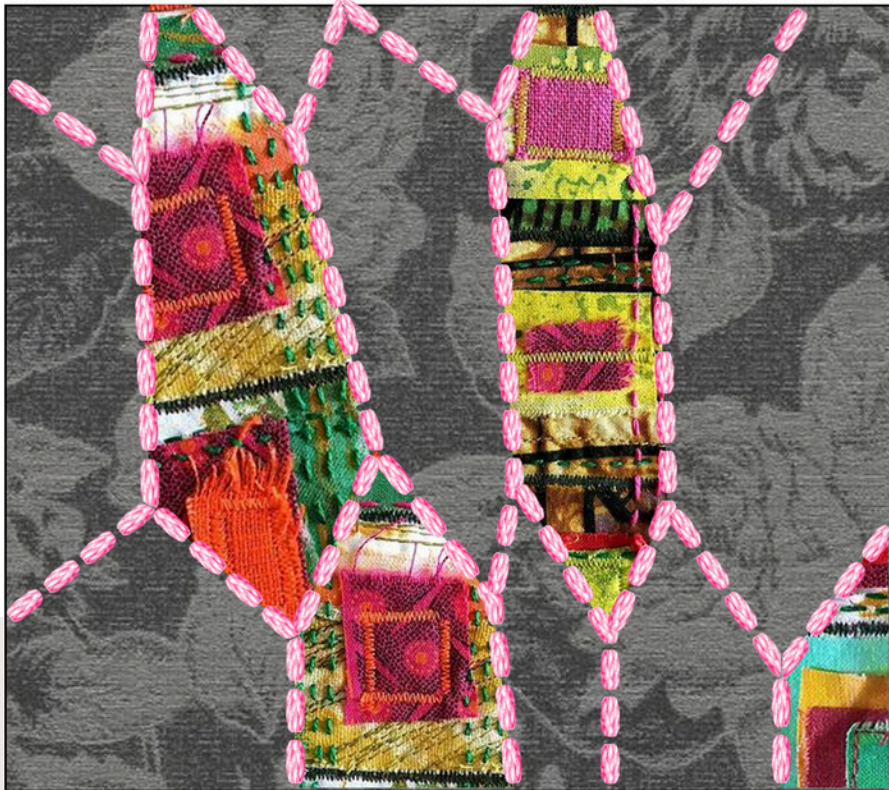


Pearl Academy

Selected Shapes.

Arjun Banerjee

International Lab Experience

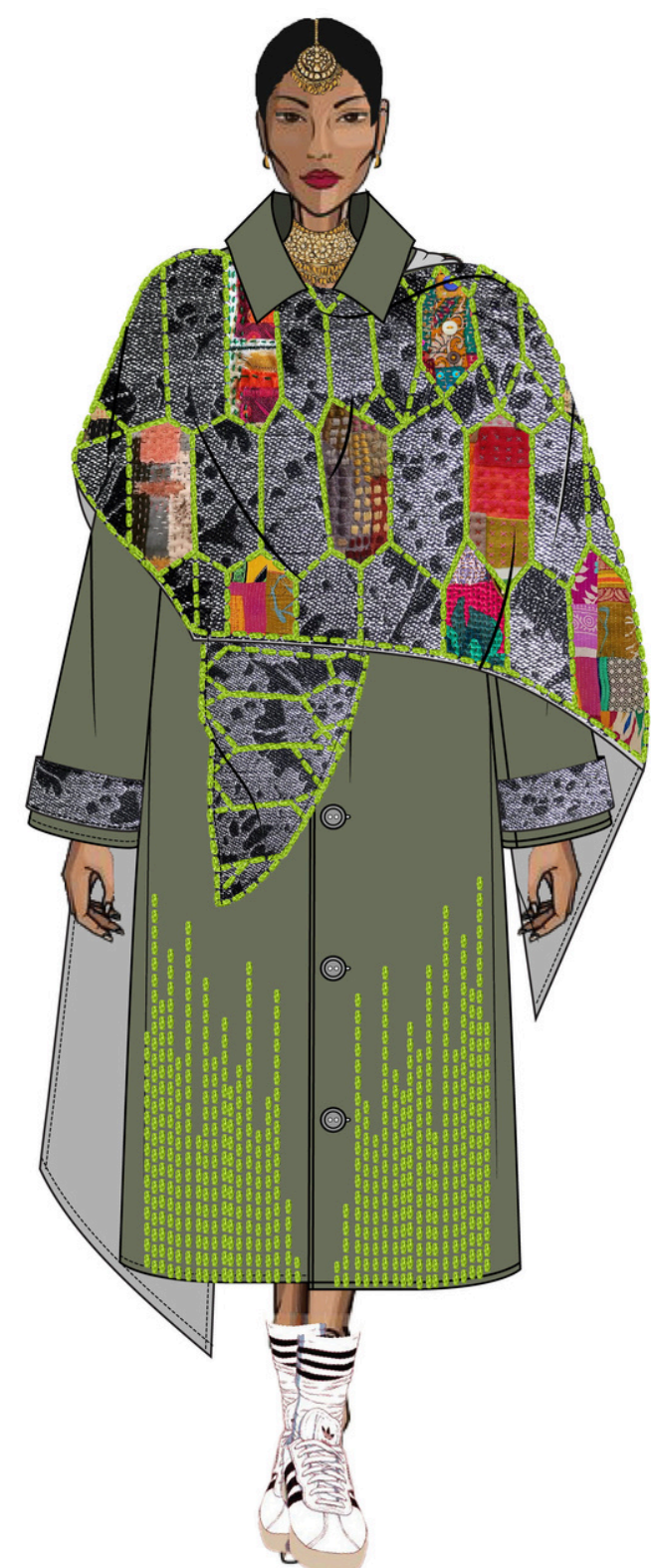
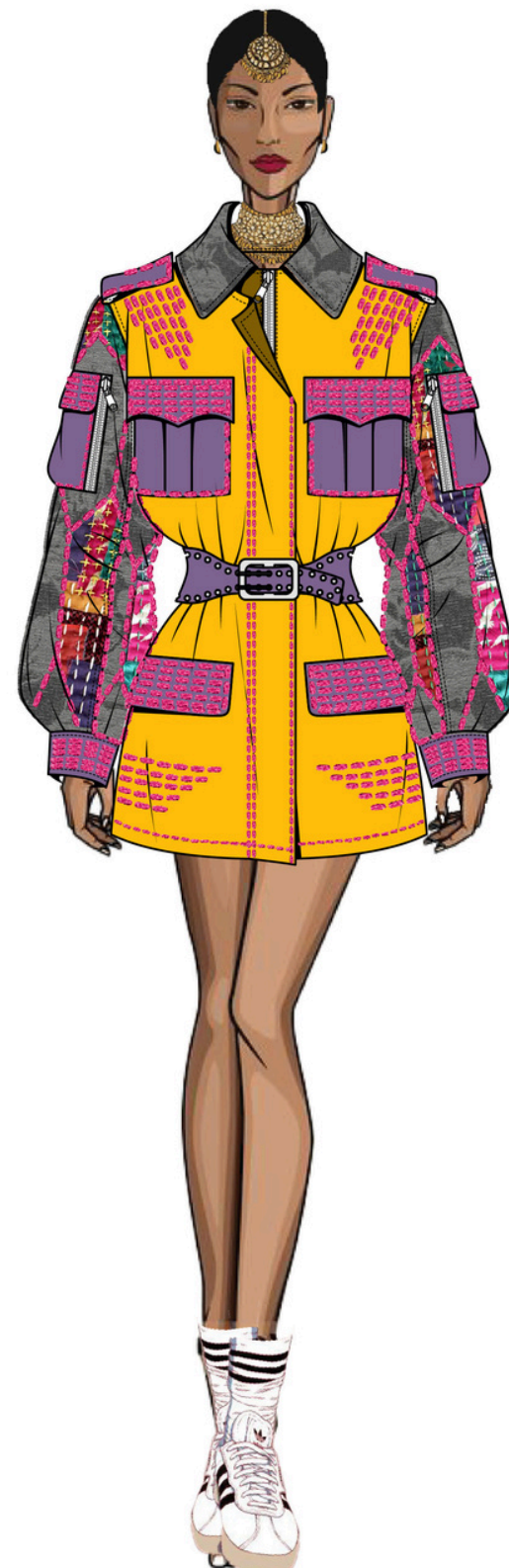
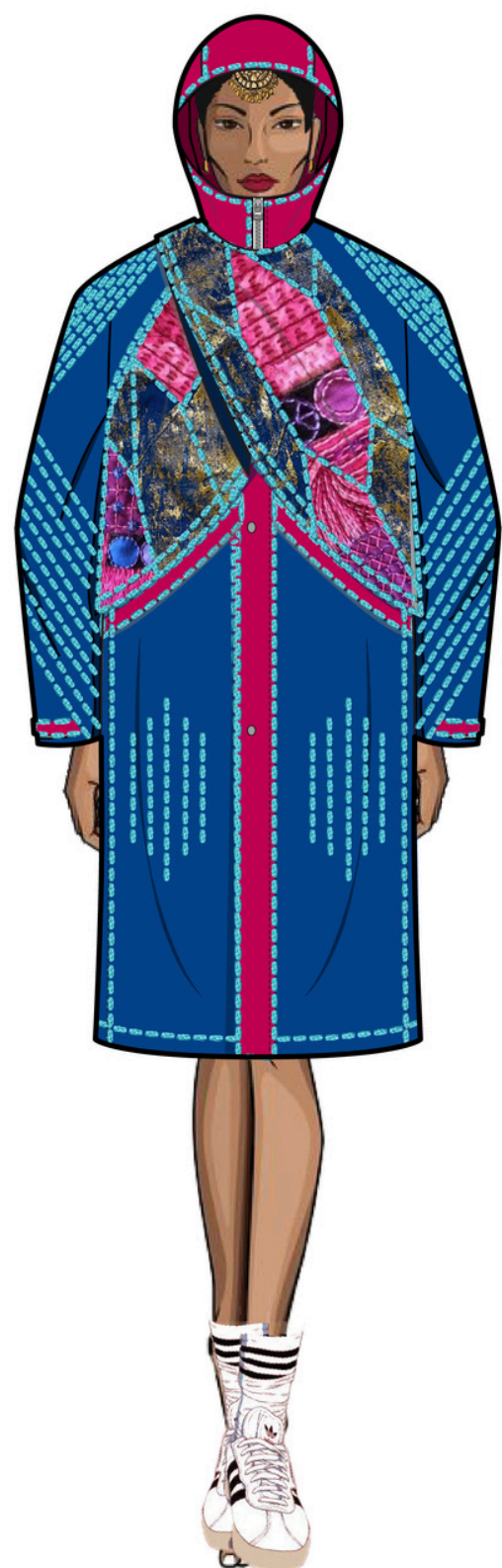
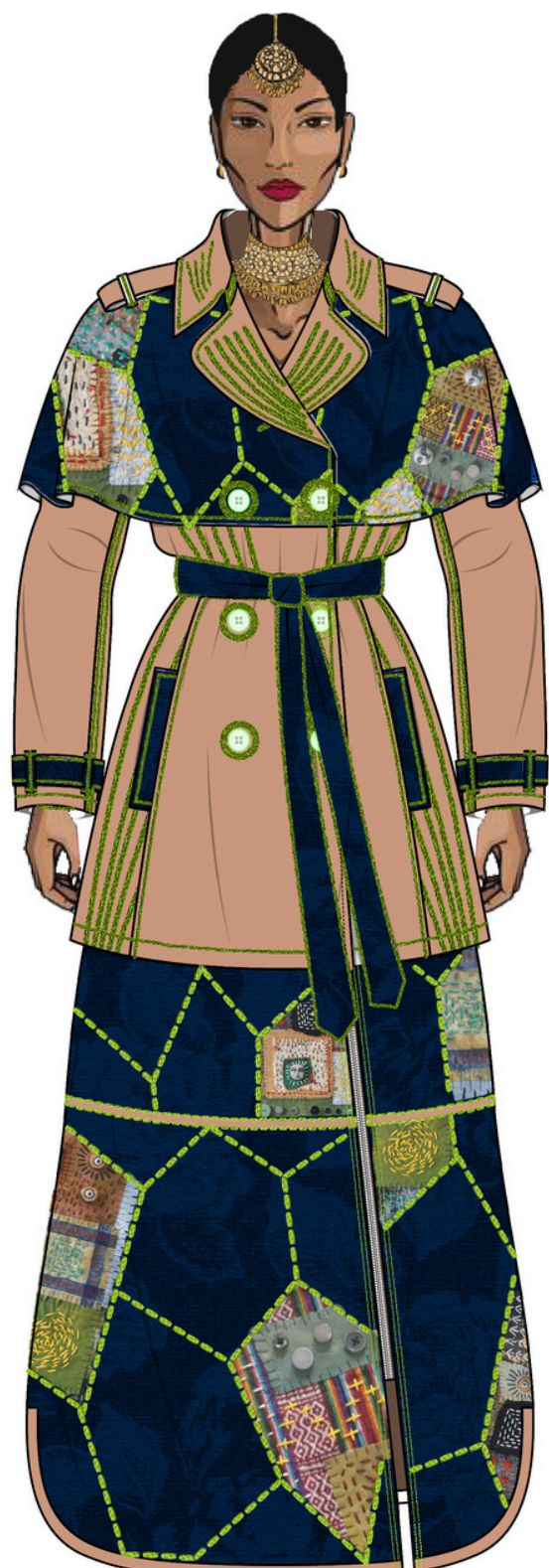


Fabrics used-
Cotton Jacquard
Silk Jacquard
Merino Wool
Lopi Wool

Pearl Academy



Kantha Swatches.



Arjun Banerjee

International Lab Experience



Pearl Academy

Mock-ups.